

Date: 16/06/2021 Author: Kosta Kostadinovic Ticket 0042145637 Project: 11-15 Ralph Street, Alexandria NSW  
 Client: Scott Electrical Serices: Value

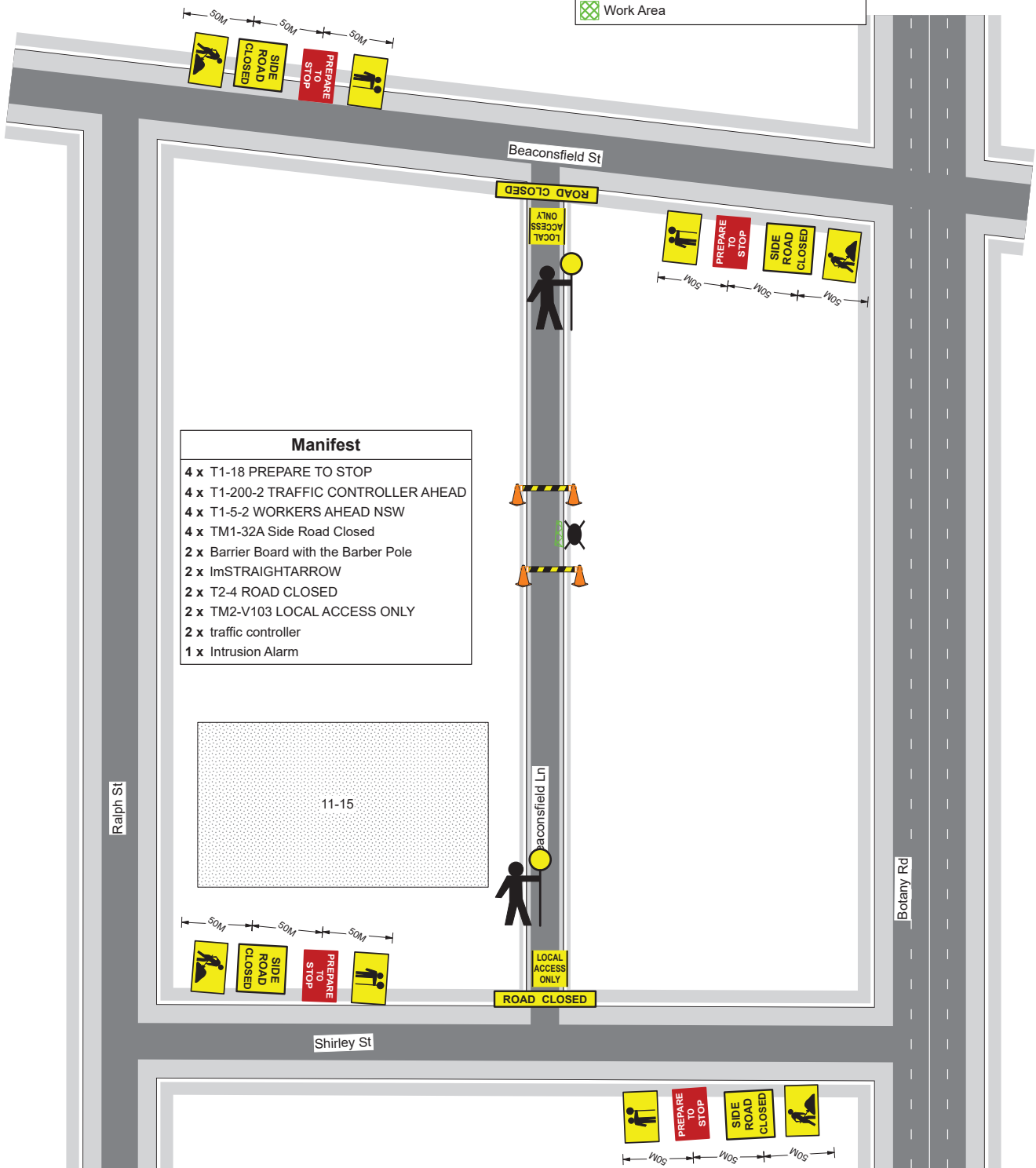
**Comments:**

RTA accredited Traffic Controllers are to be on site at all times to correctly and legally implement this prepared Traffic Control Plan. All correct Hi-Vis clothing and PPE must be worn by all Traffic Controllers. This TCP has been prepared NOT TO SCALE from either site specific details or archived details and may not accurately reflect the exact layout of the site. Details are indicative only. This Traffic Control Plan (TCP) has been prepared in accordance with Australian Standards AS1742.3, the RTA Traffic Control at Work Sites' Manual and In Control Traffic's Policy. The actual sign and cone spacings in this plan is to the relevant standards and not to site condition. Work environment and site condition may alter the correct distances stated in this plan. If you have any questions please contact Kosta Kostadinovic on 0451 553 225



**Legend**

- T1-5-2 WORKERS AHEAD NSW
- T1-18 PREPARE TO STOP
- T1-200-2 TRAFFIC CONTROLLER AHEAD
- Work Area



Manifest
4 x T1-18 PREPARE TO STOP
4 x T1-200-2 TRAFFIC CONTROLLER AHEAD
4 x T1-5-2 WORKERS AHEAD NSW
4 x TM1-32A Side Road Closed
2 x Barrier Board with the Barber Pole
2 x ImSTRAIGHTARROW
2 x T2-4 ROAD CLOSED
2 x TM2-V103 LOCAL ACCESS ONLY
2 x traffic controller
1 x Intrusion Alarm

**PLAN NOT TO SCALE**

ALL SIGNS AND SPACING MUST BE IN ACCORDANCE WITH AUSTRALIAN STANDARD 1742-3